

HOW DO YOU FIND OUT HOW HEAVY A WHALE IS?

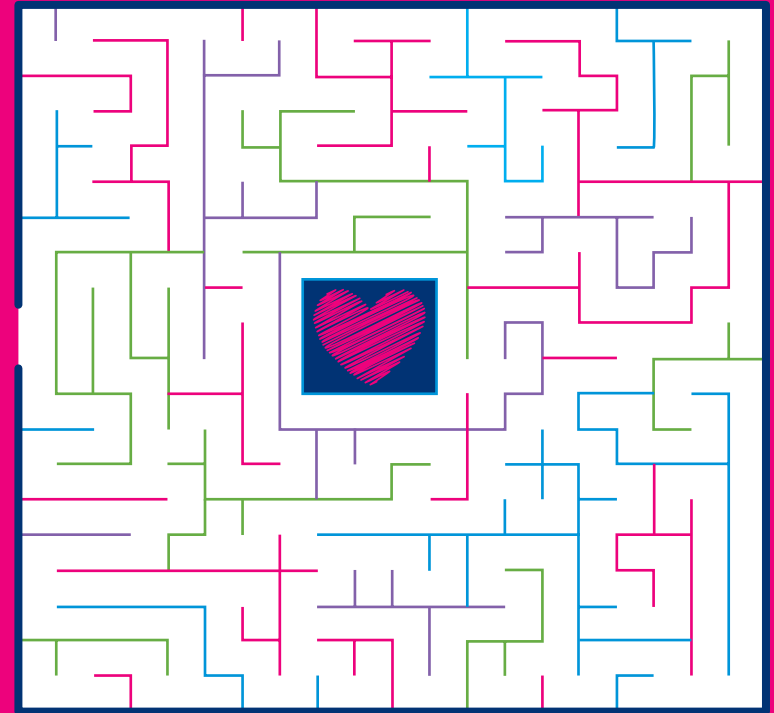
By taking it to the whale weigh station

WHY DIDN'T THE ELEPHANT WANT TO TRAVEL ON THE TRAIN?

Because she didn't want to leave her trunk in the baggage area!

Race to the heart!

START HERE



Find the hidden words

B	K	L	X	D	Y	M	M	R	M	L	B	K	A	A
V	R	Y	U	N	G	V	O	A	E	R	S	H	X	O
I	W	O	Q	D	W	Q	H	P	H	T	Z	H	X	B
Y	K	A	U	Y	N	G	R	J	V	O	F	C	Y	H
S	P	R	B	G	N	E	J	Q	W	B	A	O	S	O
V	G	L	S	I	H	Z	Q	L	V	E	X	Z	R	W
O	E	F	T	O	H	A	J	O	O	V	F	G	R	D
S	W	T	Q	G	R	Q	P	H	Q	E	I	R	L	E
Y	O	D	O	N	C	A	S	T	E	R	W	A	Q	N
C	P	P	O	D	J	O	A	V	S	L	S	N	P	Z
W	O	U	S	X	O	Z	R	C	Q	E	O	T	A	O
Z	J	H	Z	Z	O	R	J	H	Z	Y	Z	H	V	T
K	I	N	G	S	C	R	O	S	S	H	R	A	O	K
V	U	C	J	G	H	V	K	P	Z	R	V	M	T	R
Q	A	X	X	N	Y	H	U	L	L	B	E	S	U	B

- BEVERLEY
- COTTINGHAM
- HULL
- BROUGH
- HOWDEN
- SELBY
- DONCASTER
- RETFORD
- GRANTHAM
- KINGSCROSS

WHY WAS THE TRAIN ENGINE HUMMING?

Because it didn't know the words

WHAT DO YOU CALL A TRAIN THAT CAN'T STOP SNEEZING?

Achoo-choo train